



2023 ILCA U 21 European Championships & European Trophy

SAILING INSTRUCTIONS

06-13 August 2023
Stavanger, Norway

*Organizing Authority: Stavanger Seilforening
and EurILCA*

1. RULES

- 1.1 The event will be governed by the rules as defined in The Racing Rules of Sailing (RRS).
- 1.2 No National prescriptions will apply.
- 1.3 ILCA class rule 7(a) is restricted as follows: "Only one competitor shall be on board whilst racing. The competitor shall be named on the entry form."
- 1.4 Appendix P, Special Procedures for Rule 42, will apply as amended in SIs 15.
- 1.5 Appendix T, Arbitration, will apply.
- 1.6 In all rules governing this event:
 - 1.6.1 [NP] denotes a rule that shall not be grounds for protests by a boat. This changes RRS 60.1(a).
 - 1.6.2 [SP] denotes a rule for which the race committee or technical committee may apply a standard penalty without a hearing or a discretionary penalty may be applied by the international jury with a hearing. However, the race committee or technical committee may protest a boat if it considers a standard penalty is inappropriate. A boat that has been penalised with a standard penalty shall neither be protested by another boat for the same incident nor can another boat request redress for this committee action. This changes RRS 60.1, 63.1 and A5.
- 1.7 Decisions of the international jury will be final as provided in RRS 70.5.
- 1.8 [NP][DP] All competitors and support persons shall follow any reasonable instruction given by a race official.
- 1.9 If there is a conflict between languages the English text will take precedence.

2. [DP] [NP] FLEET AND RANK IDENTIFICATIONS

- 2.1 While racing in split fleets, each boat shall display a coloured sleeve corresponding to the fleet to which she has been assigned expect for the fleet group white. The sleeve shall be placed on the bottom mast between the boom vang fitting and the boom.

- 2.2 **Note that for boats required to display fleet identification colors, sleeve(s) are not supplied by the organizing authority. This is the sailors responsibility to bring his own color identification sleeve(s) for the event. If a sailor miss sleeve(s), sleeve may be available at registration for a 10 euros each unit. The mast sleeve must be at least 30 cm long and all around the bottom mast. It shall not be a plastic portofolio or tape, it shall be able to carry the tracker.**
- 2.3 When the organizing authority supplies the ranking-coloured bib vests for event leaders (1st, 2nd, 3rd), the competitors shall wear it when they are racing for that day and bring them back to the race office every day after racing.
- 2.4 A supplied bib vest shall be worn outside other clothing while racing. Competitors shall not deliberately cut or tear them

3. NOTICES TO COMPETITORS

- 3.1 Notices to competitors will be posted on the official notice board (ONB) which is the event website: <https://onb.eurilca.roms.ar/ilcau21europeans2023/index.php/en/>

4. CHANGES TO SAILING INSTRUCTIONS

- 4.1 Any change to the sailing instructions will be posted no later than 2 (two) hours before the warning signal of the race on the day it will take effect, except that any change to the schedule of races will be posted by 2000 on the day before it will take effect.

5. [DP] REGISTRATION, BOATS & EQUIPMENT INSPECTION

- 5.1 Each competitor shall register at the race office and complete all required registration and equipment inspection formalities before racing. A competitor that does not complete all required registration and equipment formalities will not be entered to the event under RRS 75.
- 5.2 Information on equipment inspection will be posted on the official notice board. Boats shall be presented with all equipment that shall be used in the event, with the bottom mast, boom and all control lines rigged and with the sail and top section derigged ready for inspection.
- 5.3 Equipment inspection will take place at the boat park according to the schedule posted on the official notice board.
- 5.4 Equipment inspection outside these times will only be possible at the discretion of the technical committee and on payment of EUR 20.
- 5.6 Equipment, including wet clothing may be inspected at any time for compliance with the class rules and the sailing instructions according to the following procedures:
- A competitor may be instructed by the technical committee, either ashore or on the water, to proceed immediately to the inspection area for inspection.
 - Until permission is given by the technical committee, a competitor once instructed to proceed for inspection, shall have no unauthorised contact with any support person, no person shall join or leave the boat, no equipment or other item shall be taken on or off that boat and the boat shall not leave the inspection area.
- 5.7 In the event of damage, hulls and equipment listed in NOR 6.2 may only be replaced with the written permission of the technical committee. If the damage occurs between 2 (two) hours before the first scheduled start on a racing day, and before the start of the last race of the day, provisional verbal permission shall be obtained from the technical committee, international jury or race committee and the written permission of the technical committee shall be applied for before the end of the protest time limit at the end of the day in which the replacement takes place.

6. SIGNALS MADE ASHORE

- 6.1 Signals made ashore will be displayed at the official flagpole located at the Dinghy Ramp.
- 6.2 **[DP][NP]** Flag D displayed with one sound means "The warning signal will be made not less than 60 minutes after flag D is displayed" No boat shall be moved from her berthing area until

this signal is made.

- 6.3 When flag AP is displayed ashore, '1 minute' is replaced with 'not less than 60 minutes' in the race signal AP. This changes RRS Race Signals.

7. FORMAT OF RACING

- 7.1 The event consists of a single series. However, the event may be split into fleets, and the single series be divided into a qualifying series and a final series in accordance with the Qualifying and Final Series Formats (see SI Addendum A).
- 7.2 There will be a total of 12 races scheduled. If there is less than 6 races completed in qualifying series, there can be more than 6 races sailed in final series to reach the total number of 12 races

8. SCHEDULE

- 8.1 Event Schedule:

Day	Time	Time	Description
06.08	08:30-12:00	13:00-18:00	Equipment Inspection
06.08	9:00-12:00	13:00-18:00	Race office open /Registration
07.08	08:30-12:00	13:00-14:00	Equipment Inspection
07.08	09:00-12:00	13:00-18:00	Race office open / Registration
07.08	14:00		Practice race followed by welcome ceremony
08.08	10:00		First warning signal. 2 races (Qualifying)
09.08	TBA		First warning signal. 2 races (Qualifying)
10.08	TBA		First warning signal. 2 races (Qualifying)
11.08	TBA		First warning signal. 2 races (Qualifying/Finals)
12.08	TBA		First warning signal. 2 races (Qualifying/Finals)
13.08	TBA		First warning signal. 2 races (Qualifying/Finals)
13.08		16:00	Later no more warning signals will be made

- 8.2 The schedule may be change by notice to competitors every day. The schedule may be changed to sail more than 2 races a day, when behind schedule. However, no more than 3 races a day will be sailed.
- 8.3 Each day succeeding races will be started as soon as practicable after the finish of the previous race.
- 8.4 On the last day of the championship, no warning signal will be made after 1600.

9. RACING AREAS

- 9.1 Addendum B shows the racing area. The racing area is defined as an area extending 100 meters beyond the entire course in which a boat would normally sail while racing.
- 9.2 [DP] Boats not racing shall avoid the racing area.

10. COURSES

- 10.1 Addendum C shows the course designations, including the course signals, the order in which marks are to be passed, and the side on which each mark is to be left.
- 10.2 No later than the warning signal, the race committee signal vessel will display the approximate compass bearing of the first leg.
- 10.3 The course may be shortened to finish at a rounding mark, or a gate provided four or more legs have been sailed on an outer course and at least three or more legs have been completed on an inner course (excluding the leg between mark 1 and mark 1A).
- 10.4 The leeward gate may be replaced by a single mark, in this case the mark will be left on port.

11. MARKS

- 11.1 Course marks 1, 1A, 2, 3s, 3p, 4s, 4p and 5 will be inflatables, conical and cylindrical buoys for

Area Alpha and inflatable conical buoys for Area Bravo.

- 11.2 The starting marks will be race committee vessels displaying orange flags.
- 11.3 The finishing marks will be a race committee vessel and a pin end buoy with a blue flag.
- 11.4 The colour of inflatable marks and laid marks will be as follows:

Racing Area Alpha

Course Marks 1	Red
Course Mark 1A	Red
Course Mark 2,	Red
Course Marks 3S, 3P	Red
Course Marks 4S, 4P	Red
New marks	Yellow

Racing Area Bravo

Course Marks 1	Yellow
Course Mark 1A	Yellow
Course Mark 2,	Yellow
Course Marks 3S, 3P	Yellow
Course Marks 4S, 4P	Yellow
New Marks	Red

12. THE START

- 12.1 To alert boats that a race or sequence of races will begin soon, the orange starting line flags will be displayed with one sound signal at least 5 minutes before a warning signal is made.
- 12.2 The warning signal for each succeeding race will be made as soon as practicable.
- 12.3 Start sequence and Fleet flags:

Racing Area

Fleets	Fleet Flags	Start Sequence	Course
ILCA 6 Girls – No identification	White	1 st Start	Outer
ILCA 7 Boys – Yellow/Gold	Yellow	2 nd Start	Outer
ILCA 7 Boys – Blue/Silver	Blue	3 rd Start	Inner

- 12.4 The starting line will be between the staffs displaying orange flags on the starting marks.
- 12.5 Starting area is defined as an area extending 100 meters beyond starting marks in which the boat would normally sail to approach starting line.

- 12.6 **[DP] [NP]** Boats whose warning signal has not been made shall sail at least **100** meters away from and to leeward of the starting line and the **extensions** during the start sequences for other fleets.
- 12.7 A boat starting later than 4 minutes after her starting signal will be scored did not start (DNS) without a hearing. This changes RRS A5.1 and A5.2.
- 12.8 Races will be started using either RRS 30.3 (U Flag Rule), or RRS 30.4 (Black Flag Rule).
- 12.9 RRS 30.4 (Black Flag Rule) is supplemented as follows:
- 12.9.1 Sail numbers will be displayed for at least 3 minutes. A long sound signal will be made when the numbers are initially displayed. A boat whose number is so displayed shall leave the racing area, defined in SI 9.1 before the new preparatory signal. If she fails to do so, she will be scored DNE.
- 12.9.2 For the purposes of RRS 30.4 a race is 'restarted or resailed' when it has the same race number as a previously abandoned or recalled race. In case there are split fleets, races are named Q1 to Qn for the Qualifying series and F1 to Fn for the Final series.

13. CHANGE OF THE NEXT LEG OF THE COURSE

- 13.1 A change of the next leg of the course will first be attempted by changing the position of the original marks. When this is not possible the course will be reset using one or more new marks (described in SI 11). When new marks are already in use, the course may be further reset using the original marks. Any action or no action by the race committee under this instruction will not be grounds for redress under RRS 62.1(a).

14. THE FINISH

- 14.1 The finishing line will be between a staffs displaying blue flags on the finish marks.

15. PENALTIES FOR BREACHES OF RRS 42

- 15.1 Appendix P will apply with the following changes:
- 15.1.1 If a first penalty is signalled after a boat has crossed the finish line, the penalty will be a 10% Scoring Penalty calculated as stated in RRS 44.3(c) but not more than a DSQ.
- 15.1.2 RRS P4 is replaced with "An action by the jury under RRS P1.2 shall not be grounds for a request for redress by a boat under RRS 60.1(b). The jury may initiate a redress hearing and may give redress for an action under RRS P1.2 by a member of the jury or its designated observer".

16. TIME LIMITS AND TARGET TIMES

- 16.1 Time limits and target times are in minutes as follows:

<i>Race Time Limit</i>	<i>Finish Window</i>	<i>Race Target Time</i>
75	20	50

- 16.2 Boats failing to finish within the time stated in the Finish Window, after the first boat sails the course and finishes will be scored Did Not Finish (DNF). This changes RRS 35, A5.1 and A5.2.
- 16.3 Failure to meet the target time will not be grounds for redress under RRS 62.1(a).

17. HEARING REQUESTS, ENQUIRIES AND PENALTIES

- 17.1 Hearing request forms are available on the Official Notice Board at <https://onb.eurilca.roms.ar/ilcau21europeans2023/index.php/en/>. Hearing requests shall be delivered there within the appropriate time limit.
- 17.2 The protest time limit will be set by and posted on the official notice board by the international jury and may be different for each fleet.
- 17.3 Notices will be posted within 30 minutes of the protest time limit for each fleet to inform

competitors of hearings in which they are parties or named as witnesses.

- 17.4 Hearings will be held in the Hearing Room.
- 17.5 In RRS 62.2(a) and 66.2(a) change 'On the last scheduled day of racing...' to 'On the last day of a series ...'.
- 17.6 To request correction of an alleged error in posted race or series results, a boat shall complete a scoring enquiry form available on the official notice board.
- 17.7 A list of boats that have been penalized for breaking RRS 42 will be posted after racing each day.
- 17.8 Only the technical committee may protest a boat for an alleged breach of the class rules, rules of RRS Part 4 Section B or RRS Appendix G. This changes RRS 60.1(a), 60.2(a) and 60.3(a).
- 17.9 If a boat is sailed without a centreboard stopper, or with no mast retention line attached (class rule 3(b) xi), a scoring penalty of 30% of the score for did not finish rounded to a whole number (rounding 0.5 upward) will, without a hearing, be added to the boats score in the last completed race in which she was racing without a centreboard stopper or the retention line. However, she shall not be scored worse than DNF. This changes RRS 63.1 and RRS A5.
- 17.10 If a sail, top mast, or bottom mast has been changed prior to a race without the permission required by SI 5.7 the competitor will be disqualified without a hearing from the last completed race when the change was used. This changes RRS 63.1 and RRS A5.
- 17.11 Penalties for any other breach of class rules are at the discretion of the international jury and may be less than disqualification [DP].
- 17.12 All hearing requests, inquiries or declarations that are required by the notice of race or sailing instructions to be in writing and delivered to the race office, may be submitted using the online system (<https://onb.eurilca.roms.ar/ilcau21europeans2023/index.php/en/>). In case of technical issue, paper forms will be available at Jury room (hearing requests) and Race Office (all other forms).

18. TITLES & PRIZES

- 18.1 Titles and prizes will be awarded according to the notice of race.

19. [DP] [NP] SAFETY

- 19.1 Rule 40.1 Personal Flotation Devices applies at all times afloat.
- 19.2 A competitor that retires from a race shall notify a race committee, safety or jury vessel as soon as reasonably possible and shall inform the race office immediately after returning to the shore.
- 19.3 Competitors not racing for any of the racing days shall inform the race office as soon as possible.
- 19.4 When the race committee displays flag V with repetitive sounds, all official and support vessels shall monitor the race committee VHF 69 channel (AREA ALPHA) VHF 72 channel (AREA BRAVO) for instructions and assist in search and rescue operations.
- 19.5 If a boat is abandoned, it will be marked with a hazard tape tied through the bow eye to signal that the competitor is safe.

20. LOCATIONS OF IMPORTANCE

- 20.1 The important locations:

	Location
Race Office	In the Club Building, 1 st floor.
Official Notice Board	Regatta Web Site
Official Flagpole	Next to the Dinghy Ramp
Equipment Inspection	In the Large Boat storage building
Hearing Room	Club Building 3 rd floor "Salon Multi Usos Dani Casas)

21. OFFICIAL VESSELS

21.1 Official vessels will be marked as follows:

Vessel	Flag
Jury	Yellow flag with black letters JURY
Race Committee	White flag with black letters A or B
Technical Committee	White flag with black letter M
Press, Media	White flag with black letters PRESS

21.2 Failure of an official vessel to fly an identifying flag shall not be grounds for redress by a boat. This changes RRS 62.1(a).

21.3 Actions by the official boats or helicopters shall not be grounds for redress by a boat. This changes RRS 62.1(a).

22. SUPPORT VESSELS

22.1 Support persons shall comply with the Support Vessel Regulations. See Attachment 2 in the notice of race.

23. TRASH DISPOSAL

23.1 Trash may be placed aboard support or official vessels.

24. [DP] RADIO COMMUNICATION

24.1 While afloat, a competitor shall not carry equipment capable of making or receiving voice or data transmissions, except for equipment provided by the organising authority.

25. DISCLAIMER OF LIABILITY

25.1 Competitors participate in the event entirely at their own risk. See RRS 3, Decision to Race. The organising authority will not accept any liability for material damage or personal injury or death sustained in conjunction with or prior to, during, or after the event.

ADDENDUM A – QUALIFYING & FINAL SERIES FORMATS

A1. INTRODUCTION

- 1.1 This addendum applies when boats are divided into fleets to sail a qualifying series and a final series.

A2. QUALIFYING SERIES

- 2.1 For the qualifying series boats will be assigned to fleets of, as near as possible, equal size and ability.
- 2.2 Initial assignments will be made by a seeding committee appointed by the organizing authority and will be posted by 2000 on the last day of registration. Decisions of the seeding committee will be no grounds for redress (This changes RRS 60.1(b))
- 2.3 In the qualifying series boats will be reassigned to fleets after each day of racing, except if only the first race of the event is completed. If all fleets have completed the same number of races, boats will be reassigned based on their ranks in the series. If all fleets have not completed the same number of races the series scores for reassignment will be calculated for those races, numbered in order of completion, completed by all fleets.
- 2.4 Reassignments will be made as follows:

	2 fleet format	3 fleets format	4 fleets format
Rank in Series	Fleet Assignment	Fleet Assignment	Fleet Assignment
1 st	1	1	1
2 nd	2	2	2
3 rd	2	3	3
4 th	1	3	4
5 th	1	2	4
6 th	2	1	3
7 th	2	1	2
8 th	1	2	1
9 th	1	3	1
And so on			

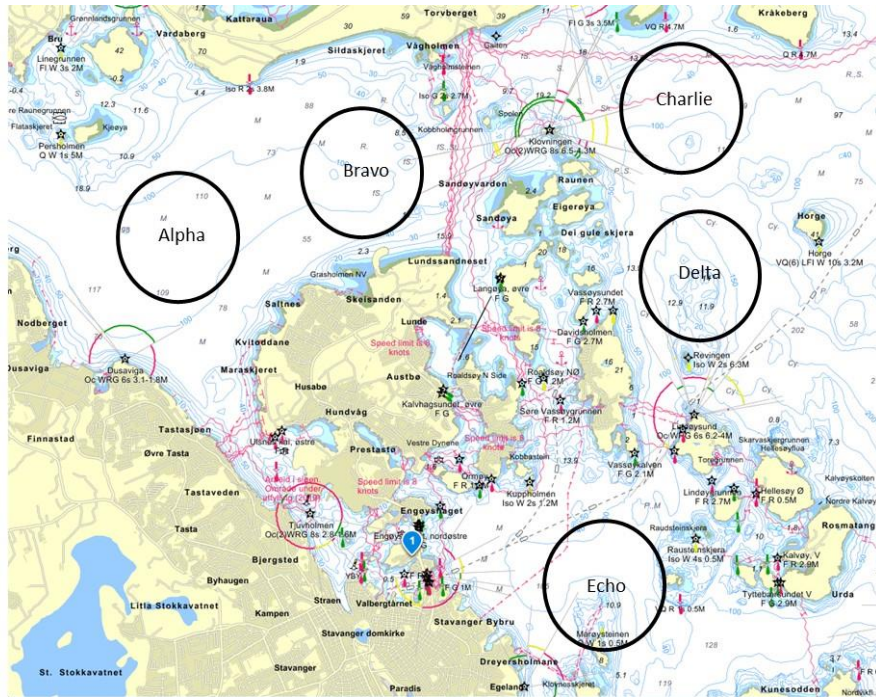
- 2.5 Reassignments will be based on the ranking available at 2000 that day regardless of protests or requests for redress not yet decided.
- 2.6 If all fleets have not completed the same number of races by the end of a day, the fleets with fewer races will continue racing the following day until all fleets have completed the same number of races. All boats will thereafter race in the new fleets.
- 2.7 If four races have not been completed on the last scheduled day of the qualifying series, the qualifying series will continue until the end of the racing day in which a fourth qualifying race is completed.
- 2.8 If at the end of the qualifying series some qualifying series fleets have more race scores than others, any extra races will be abandoned & cancelled so that all boats in the qualifying series have the same number of race scores.

A3. FINAL SERIES

- 3.1 Boats will be assigned to final series fleets based on their ranks in the qualifying series.
- 3.2 There will be the same number of fleets in the final series as there were in the qualifying series.

- 3.3 The final series fleets will be, as nearly as possible, of equal size but so that the Silver fleet is not larger than the Gold fleet and the Bronze fleet (where it exists) is not larger than the Silver fleet and the Emerald fleet (where it exists) is not larger than the Bronze fleet. Boats with the best qualifying series ranks will race all final series races in the Gold fleet; boats with the next best qualifying series ranks will race in the Silver fleet; boats with the next best qualifying series ranks will race in the Bronze fleet (where it exists); and boats with the next best qualifying series ranks will race in the Emerald fleet (where it exists).
- 3.4 Any recalculation of qualifying series ranking after boats have been assigned to final series fleets will not affect the assignments except that a redress decision may promote a boat to a higher fleet.
- 3.5** Different final series fleets need not complete the same number of final races. Boats assigned to Gold fleet will be ranked higher in the event than competitors assigned to Silver fleet and so forth, except for a boat disqualified from a final series race under RRS 6, or 69.

ADDENDUM B – CHART SHOWING RACING AREA



ADDENDUM C – COURSE DIAGRAMS

Wind from 5 to 9 knots		Wind stronger than 9 knots
Leg	Leg length	Leg length
Start – 1	0.8 nm	1.0 nm
1 – 1A	0.05 nm	0.05 nm
1-2	0.5 nm	0.6 – 0.7 nm
2 -3	0.65 nm	0.85 nm
1A-4	0.5 nm	0.6 nm
3-Finish	0.3 nm	0.5 nm

1. Outer: Start 1, 2, 3s/3p, 2, 3p, Finish
 2. Inner: Start 1, 1A, 4s/4p, 1, 2, 3p, Finish