



Organizing Authority:

RNSYC

Montgomerykaai 1 - 8400 Oostende www.rnsyc.be

Office +32(0)59/43.06.94 regatta@rnsyc.be - Harbour Master +32(0)59/50.59.12 simon@rnsyc.be

Clubhouse-bar-restaurant: +32(0)59/70.27.54 clubhouse@rnsyc.be

EurILCA EUROPA CUP & OPEN BELGIAN CHAMPIONSHIP ILCA 7 - 6 - 4

15 TO 17 April 2022

Sailing instructions

The notation '[NP]' in a rule means that a boat may not protest another boat for breaking that rule. This changes RRS 60.1(a).

All times in these sailing instructions or in any other instructions concerning the races are referring to are in Belgian summertime GMT+2 24-hour format.

1 RULES

1 The event is governed by the rules as defined in *The Racing Rules of Sailing* and as stated in the notice of race and this sailing instructions.

2 CHANGES TO SAILING INSTRUCTIONS

1 Any change to the sailing instructions will be posted before 0900 on the day it will take effect, except that any change to the schedule of races will be posted by 2000 on the day before it will take effect.

3 COMMUNICATIONS WITH COMPETITORS

1 Notices to competitors will be posted on the online official notice board located <https://bit.ly/2022europacup>

2 [DP] While racing, except in an emergency, a boat shall not make voice or data transmissions and shall not receive voice or data communication that is not available to all boats.

4 CODE OF CONDUCT

1 [DP] Competitors and support persons shall comply with reasonable requests from race officials.

2 [DP] Competitors and support persons shall handle any equipment supplied by the organising authority with care, seamanship, in accordance with any instructions for its use and without interfering with its functionality.

5 SIGNALS MADE ASHORE

1 Signals made ashore will be displayed at club mast south of the clubhouse.

2 When flag AP is displayed ashore, '1 minute' is replaced with 'not less than 60 minutes in Race Signals AP.

3 [DP] Flag G displayed with one sound on the beach means: Boats may go on the water and proceed to the racing area.

6 SCHEDULE OF RACES

1 Dates, number of races and time of the warning signal scheduled for the first race each day is:

Date	Number of races	First warning signal
15/04/2022	Max 3	11h55
16/04/2022	Max 3	10h25
17/04/2022	Max 3	10h25

2 To alert boats that a race or sequence of races will begin soon, the orange starting line flag will be displayed with one sound five minutes before a warning signal is made.

3 On the last scheduled day of racing no warning signal will be made after 15h30.



7 CLASS FLAGS

The class flags are:

Class	Flag
ILCA 7	Fleet Class flag (white flag with ILCA logo)
ILCA 6	Fleet Class flag (green flag with ILCA logo)
ILCA 4	Fleet Class flag (yellow flag with ILCA logo)

8 RACING AREA

SI Addendum 1 shows the location of the racing area(s).

9 COURSES

- 1 SI Addendum 2 show(s) the course(s), including the approximate angles between legs, the order in which marks are to be passed, and the side on which each mark is to be left.
- 2 No later than the warning signal, the race committee signal vessel will display the approximate compass bearing of the first leg.
- 3 ILCA 7 and ILCA 6 shall sail the outer loop, ILCA 4 the inner loop.
- 4 When one gate mark is missing, the remaining mark shall be rounded to port.

10 MARKS

- 1 The course marks are orange cylindrical inflatable buoys, the port-end finishing mark will be a green buoy with vertical yellow stripes.

11 OBSTRUCTIONS

Avoid the harbour channel once you are north of the green buoy "O5" or the red buoy "O6", the zone between cardinal buoy "OH9" and the western harbour wall (rocks only visible at low tide) and the **no-go-zone** (fines!!) around RT1 delimited by cardinal buoys BA-N, BA-E, BA-S and BA-W. Also respect the harbour lights of Ostend Port. See addendum 3.

12 THE START

- 1 The starting line is between a staff displaying an orange flag on the signal vessel at the starboard end and a staff with an orange flag on the pin-end boat.
- 2 [NP] [DP] Boats whose warning signal has not been made shall avoid the starting area (100 metres) during the starting sequence for other races.
- 3 A boat that does not start within 4 minutes after her starting signal will be scored Did Not Start without a hearing. This changes RRS A5.1 and A5.2.
- 4 Rule 30.4 Starting under Black Flag Rule Penalty is altered adding the follows: sail numbers will be displayed for at least 3 minutes. A long sound signal will be made when the numbers are initially displayed.

13 CHANGE OF THE NEXT LEG OF THE COURSE

To change the next leg of the course, the race committee will move the original mark or the finishing line to a new position.

14 THE FINISH

The finishing line is between a staff displaying a blue flag on the finishing signal vessel at the starboard end and the port end finishing mark

15 PENALTY SYSTEM

- 1 Appendix P will apply with the following changes:
 - a) If a first penalty is signalled after a boat has crossed the finish line, a scoring penalty of 10% of the score for did not finish rounded to a whole number (rounding 0.5 upward) will be added to the boats score. However, she shall not be scored worse than DSQ.
 - b) RRS P3 is replaced with "If a boat has been penalized for the first time under RRS P1.2 and the race is restarted or resailed the penalty is cancelled, but it is counted to determine the number of times she has been penalized during the regatta. This changes RRS 36."



- c) RRS P4 is replaced with “An action by the jury under RRS P1.2 shall not be grounds for a request for redress by a boat. The jury may initiate a redress hearing and may give redress for an action under RRS P1.2 by a member of the jury or its designated observer”. This changes RRS 60.1(b).

2 Appendix T applies

16 TIME LIMITS AND TARGET TIMES

- 1 The Mark 1 Time Limit, Race Time Limit (see RRS 35), and the Finishing Window are shown in the table below.

Time limit Mark 1	Time limit	Target time	Finishing window
25 min	90 min	45 min	20 min

- 2 If no boat has passed the first mark within the Mark 1 Time Limit, the race will be abandoned.
- 3 The Finishing Window is the time for boats to finish after the first boat sails the course and finishes. Boats failing to finish within the Finishing Window, and not subsequently retiring, penalised, or given redress, will be scored Time Limit Expired (TLE) without a hearing. A boat scored TLE shall be scored points for the finishing place one more than the points scored by the last boat that finished within the Finishing Window. This changes RRS 35, A5.1, A5.2 and A10.
- 4 Failure to meet the Target Time will not be grounds for redress. This changes RRS 62.1(a).

17 HEARING REQUESTS

- 1 Hearing requests shall be submitted by using the online form available on <https://juryterminal.manage2sail.com/>. Your password will be sent to the mail addresses of the registrar and helm specified in your entry form on Thursday 14/04/2022 10h00. (This changes RRS 61.2, 61.3, 62.2 and 66.)
- 2 The protest time limit will be posted on the official notice board within 60 minutes after the last boat finished in the last race of the day or the race committee signals no more racing today, whichever is later. When the Race committee signals no more racing ashore, the protest time limit is 30 minutes later.
- 3 Blanc diagram forms will be available on the blackboard left from the sliding entry door of the clubhouse.
- 4 Notices will be posted no later than 30 minutes after the protest time limit to inform competitors of hearings in which they are parties or named as witnesses.
- 5 Hearings will be held in the protest room, located at the ground floor of the royal North Sea Yacht Club behind the desk of the harbour master, beginning at the time posted.
- 6 A list of boats that have been penalised for breaking RRS 42 under Appendix P will be posted.

18 SCORING

- 1 Three races are required to be completed to qualify as open Belgian championship.
- 2 When 4 or more races have been completed, a boat's series score is the total of her race scores excluding her worst score. This changes RRS A2.1

19 SAFETY REGULATIONS

- 1 [DP] A boat that retires from a race shall notify a race committee, safety/patrol, or jury boat as soon as possible and the race office immediately after returning to the shore.
- 2 Competitors who require assistance should wave one arm with their hand open. If no assistance is required, the arm should be waived with fist closed.
- 3 If considered necessary, a competitor may be ordered by a race organisation vessel to abandon his or her boat and board a patrol vessel.
- 4 When the race committee boat displays flag V, which may be combined with a white flare, all team and support boats shall coincide with safety leader of the racing area on the VHF 13.
- 5 All participants shall collect their Identification Badge on Friday 15/04/2022 between 09h30 and



10h30, exact location of the collection desk will follow.

- 6 **Check-out & check-in:** your Identification Badge shall be given to the Beach Master when leaving the beach and shall be collected back immediately after returning ashore. Failure to do so shall result in a penalty of 5 points to be added to the boats score of all races for that day. However, she shall not be scored worse than DSQ.

20 REPLACEMENT OF EQUIPMENT

[DP] Substitution of damaged or lost equipment is not allowed unless authorized in writing by the principal race officer or the race office secretary. Requests for substitution shall be made to the committee using the forms available on <https://juryterminal.manage2sail.com/> at the first reasonable opportunity, which may be after the race.

21 EQUIPMENT AND MEASUREMENT CHECKS

- 1 A boat or equipment may be inspected at any time for compliance with the class rules, notice of race and sailing instructions.
- 2 [DP] When instructed by a race official on the water, a boat shall proceed to a designated area for inspection.

22 SPARE

23 [NP] OFFICIAL VESSELS

- 1 Official vessels will be identified as follows:
- a) Race committee boat: RC1
 - b) Mark layers: RC
 - c) Jury boats: yellow Flag with JURY

24 [NP] [DP] SUPPORT TEAMS

- 1 Support teams, including all support persons and support person vessels, shall comply with the support team regulations of the notice of race and sailing instructions.
- 2 Team leaders, coaches and other support persons shall stay at least 100 metres outside areas where boats are racing from the time of the preparatory signal for the first start of a starting sequence until all boats have finished or retired, or the race committee signals a postponement, general recall, or abandonment for all fleets.
- 3 Support person vessels shall register and be identified as requested in the notice of race.

25 [DP] TRASH DISPOSAL

For COVID-19 reasons, trash may not be placed aboard official vessels.

26 BERTHING

See notice of race § 18

27 SPARE

28 SPARE

29 PRIZES

See notice of race § 24

30 RISK STATEMENT

See notice of race § 22

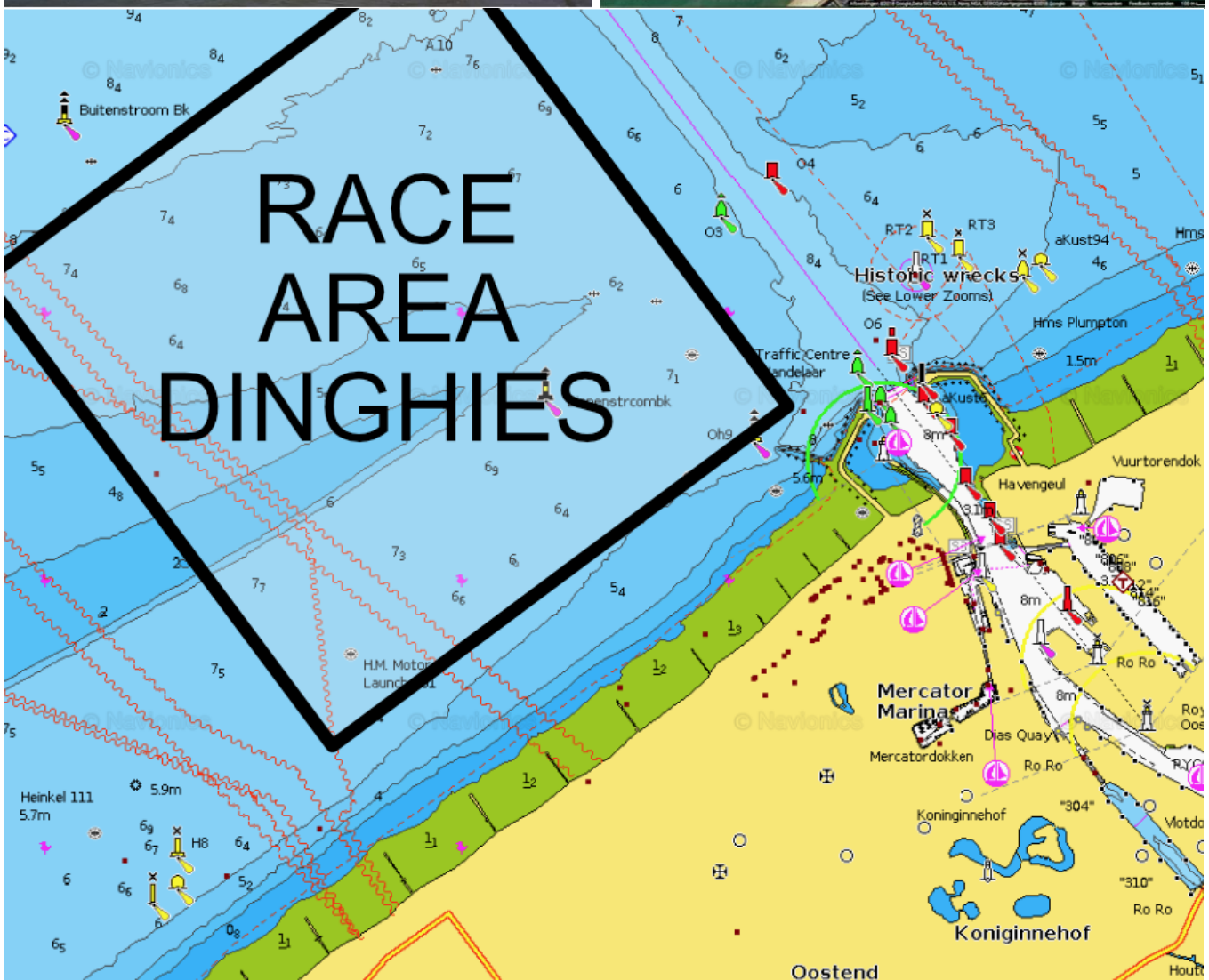
31 INSURANCE

- 1 See notice of race § 23

32 ORGANISATION

- 1 The principal race officer is Dirk Sledsens
- 2 The chairman of the protest committee is Jan-Willem Wolters

SI ADDENDUM 1

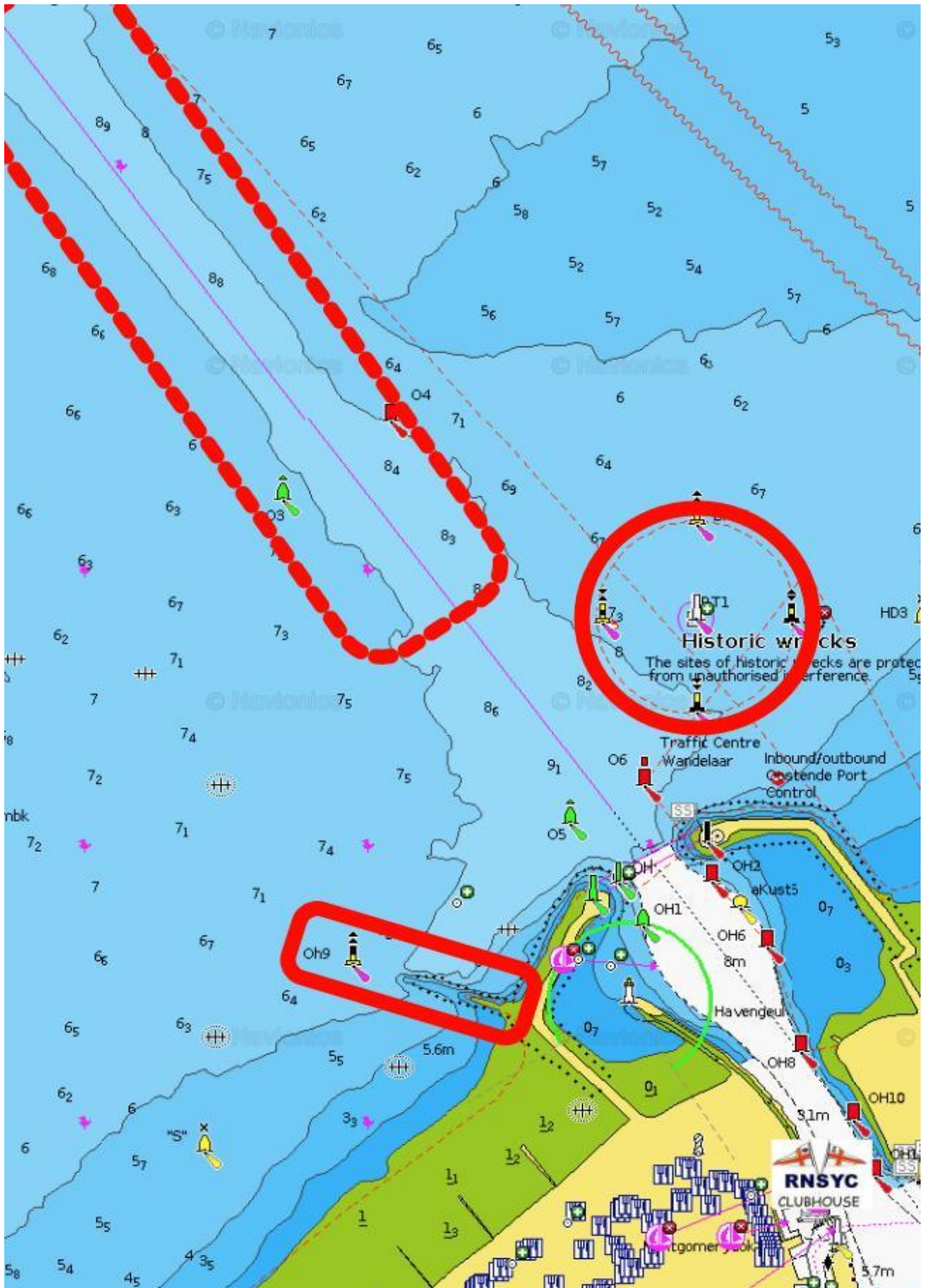


SI ADDENDUM 2: COURSES

OUTER LOOP	INNER LOOP
<p>Start - 1 - 2 - 3s/3p - 2 - 3p - Finish</p>	<p>Start - 1 - 4s/4p - 1 - 2 - 3p - Finish</p>

SI ADDENDUM 3

1. OBSTRUCTIONS



2. HARBOUR LIGHTS

- | | | | |
|---|--|--------------------------------------|--|
| 1 | | F
L
A
S
H
I
N
G | Grave emergency

All vessels must make way according to instructions |
| 2 | | | Vessels should clear the waterway and the channel immediately and by the shortest way |
| 3 | | | one way traffic
Vessels may only sail in the indicated direction |
| 4 | | | Two way traffic
Traffic may pass in both directions |
| 5 | | | One way traffic
Only the vessel with permission to do so may sail in the indicated direction. Other vessels must clear the fair way and approach immediately and in the shortest way possible |

1. Two traffic signs facing towards land will be placed under a yellow flickering light at the entrance of the Montgomery dock: the top one showing red arrows, the bottom one green ones.
Following sailing instructions will be given:

	Forbidden: direction	-sea -fishing lock+tidal dock -back port

	Allowed: direction	-sea -fishing lock+tidal dock -back port

Thanks to our partners:

