



ROOSTER-MONAUTIX EUROPA CUP

BALATONFÜRED, 23-26 SEPTEMBER 2021

Co-ordinating Authority: EurILCA (European Region of ILCA)

Organizing Authority: Balatonfüredi Yacht Club, in conjunction with the Hungarian Sailing Federation

SAILING INSTRUCTIONS

1. RULES

- 1.1 The regatta will be governed by the *rules* as defined in the Racing Rules of Sailing.
- 1.2 No national authority prescriptions will apply.
- 1.3 The ILCA class rule 7(a) is restricted as follows: Only one person shall be on board whilst racing. The person shall be named on the entry form.
- 1.4 If there is a conflict between languages the English text will take preference.
- 1.5 Races will be started with no less than 5 knots wind.
- 1.6 RRS Appendix P, Special Procedures for RRS 42, will apply. See SI 15.1.
- 1.7 Reasonable actions by event officials to implement COVID-19 guidance, protocols or legislation, even if they later prove to have been unnecessary, are not improper actions or omissions.

2. NOTICES TO COMPETITORS

- 2.1 Notices to competitors will be posted on the official notice board located at the online platform <https://www.racingrulesofsailing.org/documents/2667/event>.
- 2.2 A physical team leaders meeting will be held 2 hours before the scheduled time of the first warning signal each day at the social centre of the venue. The team leaders meeting will also be available as a Google Meet videoconference at a link to be shared in a notice.

3. CHANGES IN SAILING INSTRUCTIONS

- 3.1 Any changes to the Sailing Instructions will be posted before 8:30 on the day it will take effect.
- 3.2 The scheduled time of the races for each day shall be specified in a notice posted by 20:00 on the day before it will take effect.

4. SIGNALS MADE ASHORE

- 4.1 Signals made ashore will be displayed on the signal mast of the Balatonfüredi Yacht Club.
- 4.2 When flag AP is displayed ashore, '1 minute' is replaced with 'not less than 60 minutes' in the race signal AP. This changes Race Signals AP.

5. BOATS AND EQUIPMENT

- 5.1 In the event of damage, boats and equipment may only be substituted with the written permission of the technical committee, international jury or race committee. Requests for equipment substitution shall be delivered via the online platform.



5.2 If the damage occurs later than 90 minutes before the first scheduled start on a racing day and before the start of the last race of the day, provisional verbal permission shall be obtained from the technical committee, international jury or race committee. The written permission of the technical committee, international jury or race committee shall be applied for before the end of protest time at the end of the day in which the substitution takes place.

6. FORMAT OF RACING

6.1 The ILCA Class is divided in ILCA 7, ILCA 6 and ILCA 4 fleets and each fleet will have separate starts.

7. SCHEDULE OF RACES

7.1 The scheduled time for the first warning signal for the first race of each racing day is 10:00.
7.2 On the last day no warning signal for any fleet will be made after 14:00.

8. CLASS FLAGS

8.1 Class flags are described in the table below.

Fleet	Flag
ILCA 7	Fleet Class flag (white flag with ILCA logo)
ILCA 6	Fleet Class flag (green flag with ILCA logo)
ILCA 4	Fleet Class flag (yellow flag with red ILCA logo)

9. RACING AREAS

9.1 The approximate racing area is shown in Appendix 1.

10. THE COURSES

10.1 The SI Addendum A shows the course, including the approximate angles between legs, the order in which marks are to be passed, and the side on which each mark is to be left.
10.2 No later than the warning signal, the race committee signal boat will display the approximate compass bearing of the first leg.
10.3 The course may be shortened to finish at any mark provided that 3 or more legs will have been sailed.
10.4 When one gate mark is missing, the remaining mark shall be rounded to port.
10.5 Marks will be described in the SI Addendum A.

11. THE START

11.1 The starting line will be between two staffs displaying a large orange flag on two race committee vessels.
11.2 **[DP]** A buoy may be attached to the race committee starting vessel ground tackle. Boats shall not pass between this buoy and the race committee starting vessel at any time.
11.3 **[DP]** Boats whose warning signal has not been made shall sail at least 50 meters away from and to leeward of the starting line during the starting sequence for other races.
11.4 A boat starting later than 4 minutes after her starting signal will be scored DNS without a hearing. This changes RRS A5.1 and A5.2.
11.5 To alert boats that a race or sequence of races will begin soon, the orange starting line flag will be displayed with one sound at least five minutes before any other procedure.



11.6 Starting under Black Flag Rule Penalty, RRS 30.4 is changed adding the follows: sail numbers will be displayed for at least 3 minutes. A long sound signal will be made when the numbers are initially displayed.

12. CHANGE OF THE NEXT LEG OF THE COURSE

12.1 When it is not possible to change the position of the original marks, the course may be reset using one or more new marks. When new marks are already in use, the course may be reset using original marks.

12.2 Except at a gate, boats shall pass between the race committee boat signalling the change of the next leg and the nearby mark, leaving the mark to port and the race committee vessel to starboard. This changes RRS 28.1.

13. THE FINISH

13.1 The finishing line will be between a staff displaying a blue flag on a race committee vessel and the finishing mark described in the SI Addendum A.

14. TIME LIMITS AND TARGET TIMES

14.1 The length of the course will be set for a target time of 50 minutes. Failure to meet the target time will not be grounds for redress. This changes RRS 62.1(a).

14.2 Boats failing to finish within 20 minutes after the first boat sails the course and finishes will be scored Did Not Finish without a hearing. This changes RRS 35, A5.1 and A5.2.

15. PENALTY SYSTEM

15.1 Appendix P will apply with the following changes:

- (a) **[SP]** If a first penalty is signalled after she has finished, a boat may take the penalty or accept a scoring penalty of 10% without a hearing.
- (b) A boat that has either retired from or been disqualified in a race for a breach of RRS 42 shall not compete in that race if it is restarted or resailed. For the purposes of this instruction a race is 'restarted or resailed' when it has the same race number as a previously abandoned or recalled race, even if the race is resailed on a later date, or is resailed as part of a final series instead of a qualifying series. If she competes in that race, she shall be disqualified without a hearing and that score shall not be excluded (DNE) and the jury will consider calling a hearing under RRS 69.1(a). This does not apply when the disqualification is the result of the boat's first penalty and she was not informed of the disqualification prior to the restart or resail. This changes RRS 36. This means:

Yellow Flag	Immediate penalty action by boat	After a general recall or a postponement or an abandonment	No action by boat	After a general recall or a postponement or an abandonment
1 st	Two turns / 10% (SI 15.1(a))	Can restart	DSQ	Shall not restart if notified of the DSQ.
2 nd	Retire (RET)	Shall not restart	DNE	Shall not restart
3 rd	Retire (DNE)	Shall not restart	DNE Regatta	Shall not restart

15.2 **[NP]** Measurement Penalties

- (a) **[NP]** Measurement protests will only be accepted from technical committee, race committee or jury.



- (b) **[SP]** If a boat is sailed without a centreboard stopper, or with no mast retention line attached (class rule 3(b) xi), a scoring penalty of 20 points will, without a hearing, be added to the boats score in the last completed race in which she was racing without a centreboard stopper or the retention line. However, she shall not be scored worse than DSQ. This changes RRS 63.1.
- (c) If a sail, top mast, or bottom mast has been changed prior to a race without the permission required by SI 5.2 the sailor will be disqualified without a hearing from the last completed race when the change was used. This changes RRS 63.1.
- (d) **[DP]** For any other measurement protest, the jury may apply an alternative penalty to disqualification.

15.3 Scoring and arbitration penalties

- (a) Scoring penalties will be applied according to RRS 44.3(c).
- (b) The scoring abbreviation for an arbitration penalty is ARB.

15.4 Whistle system: In order to encourage boats to take penalties afloat, jury members may blow a whistle when they see what they believe to be a breach of a rule. If no boat takes a penalty, the international jury may lodge a protest.

16. HEARING REQUESTS

- 16.1 Hearing requests shall be delivered via the online platform within the appropriate time limit.
- 16.2 The protest time will begin as soon as practicable after the finish of the last boat in each fleet. The protest time limit will daily be decided and posted on the official notice board and may be different for each fleet. Hearings will be held in the jury rooms near the race office.
- 16.3 Notices will be posted on official notice board no later than 30 minutes after the protest time limit to inform competitors of hearings in which they are parties or named as witnesses.
- 16.4 A list of boats that have been penalized under RRS Appendix P will be posted on the official notice board.
- 16.5 Breaches of instructions 5.2, 19, 21, 22 and 24 shall not be grounds for a protest by a boat. This changes RRS 60.1(a). For these breaches the international jury may apply a penalty less than disqualification.
- 16.6 Decisions of the international jury will be final as provided in RRS 70.5.
- 16.7 **[NP]** denotes a rule that shall not be grounds for protests by a boat. This changes RRS 60.1(a).
- 16.8 **[SP]** denotes a rule for which a standard penalty may be applied by the race committee technical committee without a hearing or a discretionary penalty applied by the international jury with a hearing. A list of these breaches and the associated standard penalties will be posted on the Official Notice Board. However, the race committee / technical committee may protest a boat when they consider the standard penalty to be inappropriate. This changes RRS 63.1 and A5.

17. ARBITRATION SYSTEM

17.1 RRS Appendix T applies.

18. [DP] EQUIPMENTS AND MEASUREMENT CHECKS

18.1 A boat and equipment may be inspected at any time for compliance with the class rules, as wet clothing rules at the discretion of the technical committee, race committee or international jury.



19. [DP] [NP] SAFETY REGULATIONS

- 19.1 The race committee will protest a boat for a breach of these safety regulations.
- 19.2 RRS 40.1 applies at all times while afloat.
- 19.3 Competitors who require assistance from rescue boats should wave one arm with hand open. If no assistance is required, the arm should be waved with fist closed.
- 19.4 If considered necessary, a competitor may be ordered by a race organisation boat to abandon his or her boat and board a rescue vessel.
- 19.5 A boat that retires from a race shall notify the race committee as soon as possible. The boat shall complete a retirement declaration form at the regatta office on return ashore.
- 19.6 Boats shall avoid commercial traffic and shall cross shipping channels at right angles only.

20. SCORING

- 20.1 When less than 4 races have been completed, a boat's regatta score will be the total of her race scores.
- 20.2 When 4 or more races have been completed, a boat's regatta score will be the total of her race scores excluding her worst score.
- 20.3 To request a correction of an alleged error in posted results, a boat may complete a scoring enquiry form via the online platform.

21. [DP] ACCREDITED TEAM AND SUPPORT PERSONS AND VESSELS

- 21.1 Accredited vessels are the vessels having filled the accreditation form at the race office. They are the only vessels authorized to go afloat and approach sailing area and sailors. Each support boat shall, at all times when afloat, clearly display an identification number supplied at registration. A deposit of 3000 HUF or 10 EUR will be required for the identification number.
- 21.2 [NP] Excluded area: during the period between the first warning signal of the first fleet in a race and the finish of the last boat in the last fleet in that race:
 - (a) do not cross the racing area defined by the course diagram,
 - (b) do not stay closer than 50 m to any sailing boat and from any point defining the starting line (when orange flag up) and finish line (when blue flag up).
- 21.3 Exceptions to SI 21.2:
 - (a) when a postponement is signalled, in which case they may stay in the racing area till the first signal displayed after the end of the postponement;
 - (b) this instruction will not apply to rescue operations.
- 21.4 Accomplishments: If an accredited boat does not comply with this instruction, or its crew has an incorrect behaviour, the accreditation may be suspended, cancelled, and/ or no more issued in next Europa Cup of the series. That decision may be made by the jury with the Eurilca Representative.

22. INSURANCE

- 22.1 Each participating boat shall be insured with valid third-party liability insurance with a minimum cover per event as stated in the NOR.



23. LIABILITY

23.1 The host sailing club, the National Authority and the International Laser Class Association, their officers, members and volunteers do not accept liability for loss of life or property, personal injury or damage caused by or arising out of the Europa Cup Regattas and competitors take part in the Regattas entirely at their own risk. The establishment of the Notice of Race and the Sailing Instructions in no way limits or reduces the complete and unlimited responsibilities of a competitor being solely and entirely responsible for the management of a boat he or she is sailing. A competitor must be of good health and a competent sailor capable of sailing an ILCA dinghy in strong winds. It is the responsibility of each sailor to decide to participate in a race or to continue racing.

24. RIGHTS TO USE NAME AND LIKENESS

24.1 By participating in this event, competitors automatically grant to the organizing authority and the event sponsors the right, in perpetuity, to make, use, and show, at their discretion, any photography, audio and video recordings, and other reproductions of them made at the venue or on the water from the time of their arrival at the venue, until their final departure, without compensation for the purpose of news reporting, regatta documentary, advertising to promote the regatta, the national or the international class association or sailing, and advertising where the above pictures/video recordings/etc. are shown in the context of sailors/participants competing in Europa Cup Regattas.

ADDENDUM A

1. COMPETITION FORMAT

1.1 Each fleet will sail as a single group.

2. OFFICIAL VESSELS

2.1 Official vessels will be identified as follows.

Type of vessel	Identification
Race Committee	RC on a white background
Protest Committee	JURY on a white background
Media	MEDIA on a green background

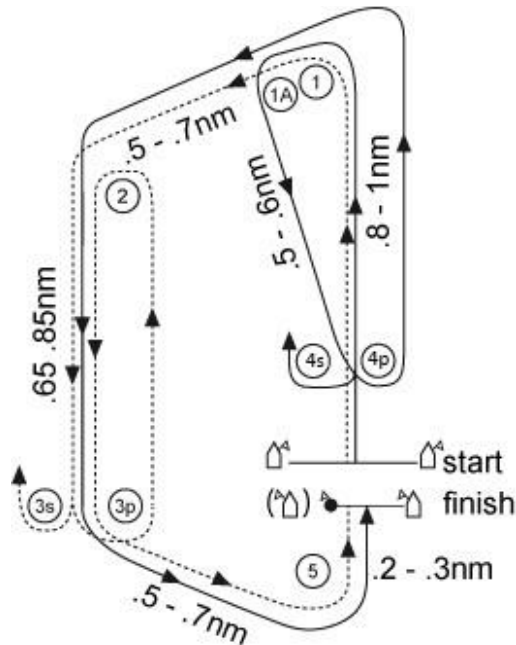
3. MARKS

3.1 Marks will be as described below.

Mark	Description
1, 2, 3s, 3p, 4s, 4p, 5	white cylinder
1A	thin yellow cylinder
starting marks	race committee vessels
finishing marks	a race committee vessel and a thin yellow cylinder
new marks	yellow cylinder



4. COURSE DIAGRAM



ILCA 7, ILCA 6 – Outer Loop: Start – 1 – 2 – 3S/3P – 2 – 3P – 5 – Finish

ILCA 4 – Inner Loop: Start – 1 – 1A – 4S/4P – 1 – 2 – 3P – 5 – Finish

5. [DP] TRASH DISPOSAL

5.1 RRS 55 applies. Trash may be placed aboard support and race committee vessels.

6. [DP] ADVERTISING

6.1 World Sailing Regulation 20 applies.

7. PRIZES

7.1 Prizes are stated by the Notice of Race 13.1.

7.2 Prizes will be assigned also if only one race will be sailed. In case of ties the prize will be raffled.

7.3 Additional prizes may be introduced.

8. FORBIDDEN AREAS

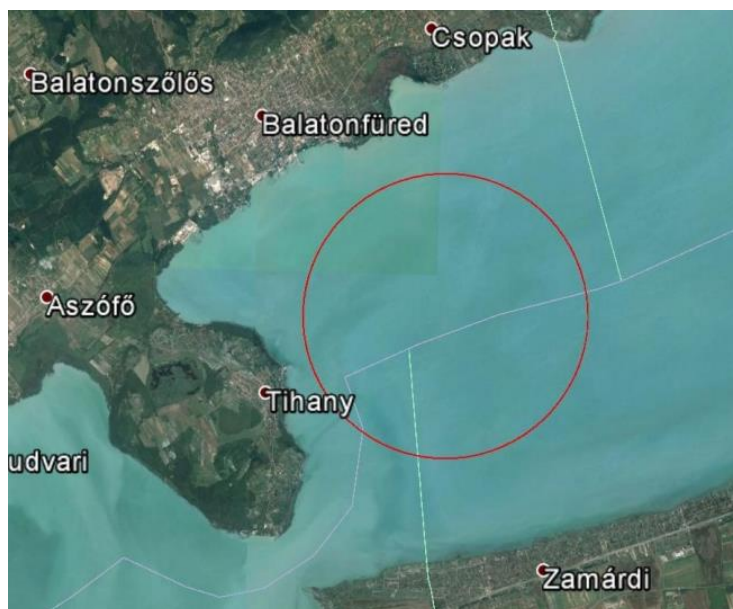
8.1 The area surrounded by yellow columns with a red stripe in front of the harbour of the Balatonfüredi Yacht Club is a forbidden area and shall be avoided by any vessels related to the event. The area is shown in Appendix 2.

9. [DP] RADIO COMMUNICATION

9.1 A boat shall neither make radio transmissions while racing nor receive radio communications not available to all boats, except in an emergency or when using equipment provided by the race committee.



APPENDIX 1 – RACING AREA



Approximate area centre	Diameter	VHF
N 46° 55.593' E 17° 55.945'	5.4 km	18

APPENDIX 2 – FORBIDDEN AREA

