



Rescue and Evacuation Plan

Distribution List

- PRO and Race Officers
- Marina Vilamoura security officer
- Mark Layers and Emergency RIB's
- Race Office Manager
- Jury members
- Official Notice Board
- Coaches and Teams Responsible
- Sailors

Acronyms

AMB – Ambulance's

ECC – Event coordination Center

COS – Rescue Operations Commander

GNR – Republican National Guard - "Police"

PCOC – Joint Operating Center

PM – Maritime Police

SIOPS – Integrated Operational System for Safe and Rescue

SGO – Operations Management System

UMS – Ambulance

VLCI – Fire Fighting Vehicle

ZCR – Rescue Concentration Zone

MAIN PARTNERS



INSTITUTIONAL PARTNERS



EVENT SPONSORS





Rescue and Evacuation Plan

I - General

- Preamble
- Scope
- Event Characteristics
- Objective

II - Organization

⇒ Safe and Rescue Organization

III - Annexes

- Annex 01 - Contacts of the Event Coordination Center
- Annex 02 - Location of emergency
- Annex 03 - Plan for Medical Procedures for Rescue at Sea and Evacuation

MAIN PARTNERS



loulé
concelho



INSTITUTIONAL PARTNERS



EVENT SPONSORS





General

Preamble:

Vilamoura Sailing maintains an activity of water sports, sailing and others in the premises of Vilamoura Marina.

The activity of nautical and sailing carries risks by unfolding in a hostile environment. In order to mitigate the risks and offer increased security, a plan and operations of the activities with emphasis on Rescue and Evacuation at sea and ashore were created.

Scope:

This Plan is of direct application to the areas where the regular activities of Vilamoura Sailing take place and events by this entity organized or promoted, surrounding areas and has the duration corresponds to the period in which the training center is in operation or the period in which the events take place.

This plan articulates with the Municipal and District emergency plans and the emergency plan of Vilamoura Marina.

Framework of activities and events:

Vilamoura Sailing Training Centre develops activities in the area of hi performance sailing, in dinghy sailing class in an age group of 16 to 70 years.

The practitioners are athletes with a high level of dexterity and technical knowledge. Mostly professional athletes.

Thus, it was intended to make known to these athletes the Racing Area of Vilamoura, and the Algarve region. Another of the objectives outlined from the beginning was to promote the Club and the region as a training center for international teams.

Objective:

This plan aims to be an instrument for planning and organizing emergency response actions. The PSE aims to make known, to all the elements present that contribute to the safety of the activity, the Civil Protection Agents, Entities and Support Agencies and the internal organization, the Protection and Rescue Plan.

MAIN PARTNERS



INSTITUTIONAL PARTNERS



EVENT SPONSORS





Rescue and Evacuation Plan

This Plan aims at systematically triggering the response of the Protection and Rescue operations, so as to ensure better integrated management of the resources made available.

Areas of intervention:

- South Compound
- Interior Area of the Marina technical area;
- North Compound
- Park area next to Lake Hotel
- Race Course
- Water zone where the activities will take place.
- Public Areas
- Management of public areas (access roads and emergency corridors) competent authorities that control them.

Opening/closing times of the venues:

- Training Center (regular activity)
 - Opening - 08:30H
 - Closing - 18:00H
- During events
 - Opening - 08:00H *
 - Closing - 20:00H *

*The schedule may change according to the specific program of each event

MAIN PARTNERS



INSTITUTIONAL PARTNERS



TECHNICAL PARTNERS



EVENT SPONSORS





Coordination, communication and first intervention actions:

It has permanently created a Coordination Center of Activity CCA which will have the following functions:

ensure the communications and coordination of the existing human emergency resources in the premises and, where necessary, with the external resources that may be involved;

Keep viewing of all features that may be relevant to emergency resolution.

⇒ Preventive functions:

- Be informed of the general and particular risk in this compound;
- Highlight and report anomalies that are detected in inspections or that are participated;
- Be aware of the existence, procedures and way of using the rescue equipment's available to them.

⇒ Intervention functions:

- Suppress, in the shortest amount of time, the cause of any anomaly through direct and rapid actions;
- Avoid panic;
- Objectively communicate the occurrence to the Coordination Center of Activity;
- Cut off supply;
- Insulation of flammable areas / materials;
- To remove and/or prevent the return or stay of persons who may be affected, surrounding the area, and/or regulating evacuation;
- Comply with and/or enforce the instructions of the Operations Control Center.

MAIN PARTNERS



INSTITUTIONAL PARTNERS



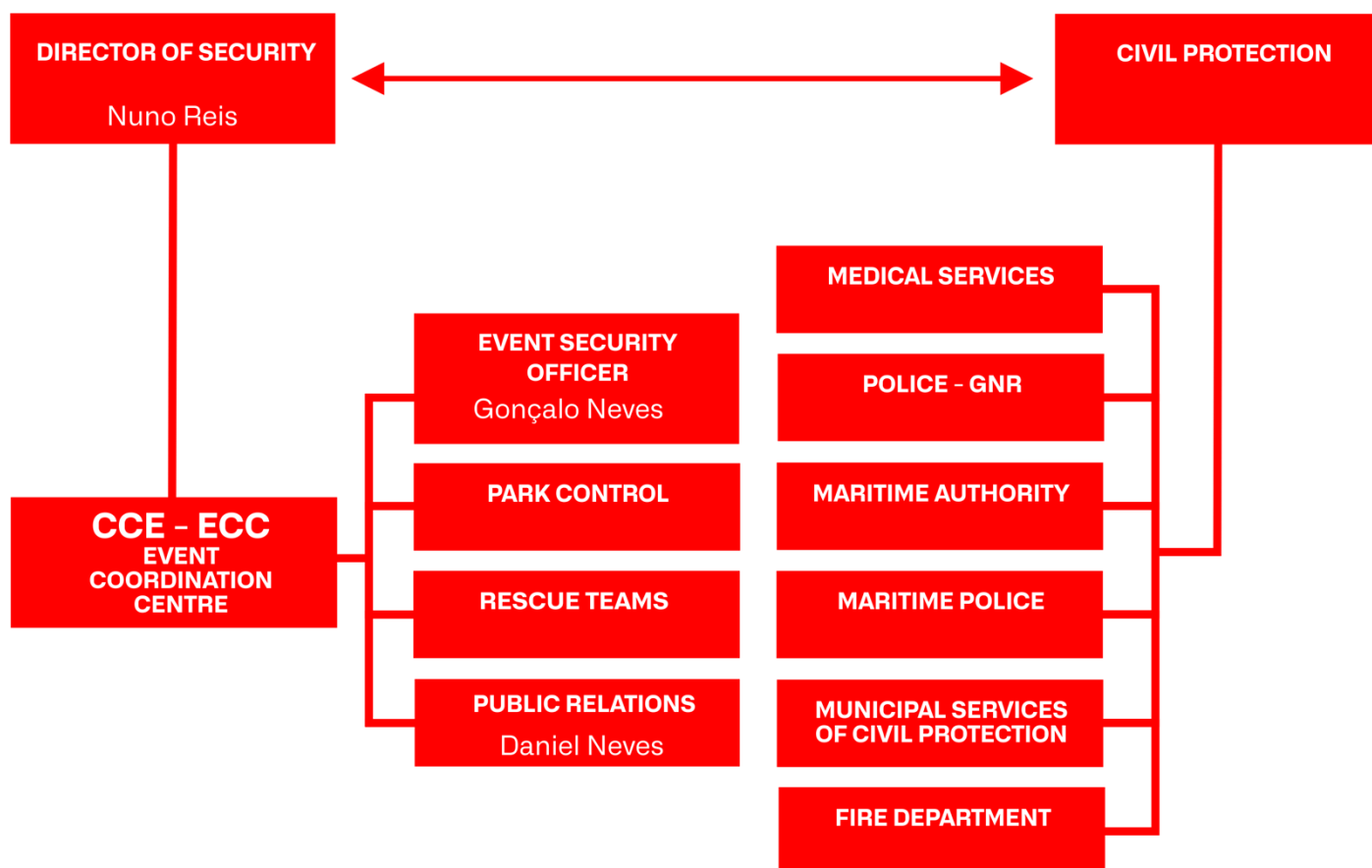
EVENT SPONSORS





Organization of the Protection and Rescue Plan

Constitution:



MAIN PARTNERS



INSTITUTIONAL PARTNERS



EVENT SPONSORS





ACTIVITY COORDINATION CENTER (CCA)

VILAMOURA SAILING OFFICE - Point 6 - Annex 01

It is the place where those responsible for organizing the Activity meet, and those responsible for other services that collaborate for it. This group of people ensures the communication and coordination, in emergency, of the human and material resources of its area of intervention with the various entities represented in CCA. It is from this center that the necessary resources are triggered for any emergency situation that may occur, thus ensuring an adequate and effective mobilization resources of safety and rescue.

SAFETY DIRECTOR OF VILAMOURA SAILING CENTRE (DS)

Nuno Reis

With the Operations Control Center, Director of Security of Vilamoura Sailing Centre analyzes, evaluates and determines the evacuation area(s). It is for this element to carry out the alarms/evacuation signs.

Human resources it coordinates:

- Activity Safety Director (DSA)
- Event Safety Director (DSP)
- Public Relations (PR)
- Others

ACTIVITY SAFETY DIRECTOR (DSA)

Ivo Ferreira

He is responsible for all resources of intervention in the training center area.

It guarantees the operationality of the communication system between the resources made available in the Rescue and Evacuation Plan.

Communicates with the Coach/ Rescue Team that coordinates the rescue operations at sea via VHF channel 69.

Human resources it coordinates:

- Private security
- Medical team

MAIN PARTNERS



loulé
concelho



INSTITUTIONAL PARTNERS



EVENT SPONSORS





SECURITY RACE DIRECTOR (DSP)

Gonçalo Neves

He is responsible for all safety resources in the area of **the entire event**.

It guarantees the operability of the communication system between the resources made available in the Rescue and Evacuation Plan.

Communicates with the Race Committee that coordinates the security operations at sea via VHF channel 69 and with the Event Security Director and CCE in VHF closed channel.

The Race Committee coordinates safety operations at sea which includes Organization Safety boats and Coach boats with safety functions. Security communications between the Race Committee and the CCE are made through the DSP.

It guarantees the free movement of the road conditioned to traffic and intervention / evacuation corridor inside the event area.

Human resources it coordinates:

- Race Committee and sea safety
- Park access controllers
- Private security
- Medical intervention

PUBLIC RELATIONS (PR)

Daniel Neves

Coordinates all emergency information of the Event Coordination Center for dissemination / communication to the media.

MAIN PARTNERS



INSTITUTIONAL PARTNERS



EVENT SPONSORS





The procedure for evacuation at Sea follows the following phases:

During the regular activity of the Sailing Center:

- The Coach or rescue team at Sea identifies the situation and clearly assesses the risk.
- The Coach or rescue team at sea immediately informs Vilamoura Sailing, where the activity of the athletes involved in the incident takes place, through VHF Channel 69.
- The Coach or rescue team stabilizes the victim(s) in the Motorboat and initiates the evacuation to the evacuation point (**EP** in Venue Map). **Annex 4**
- The Coach or a team member remains with the victim(s) until the arrival of the emergency services, triggered by Vilamoura Sailing.
- The Coach or a team member shall accompany the victim(s) and the emergency services on the evacuation process.
- The Coach or a team member should, if possible, carry the ID documents of the victim(s).
- Emergency services will decide the course of action and where to evacuate the victim(s) if necessary.

During Sailing Events:

- The Coach or Rescue Team on the water identifies the situation and clearly assesses the risk.
- The Coach or Rescue Team immediately informs the President of the Race Committee of the Race Area, in which the activity of the sailors involved in the incident takes place, through VHF Channel assigned to the respective Race Area.
- The VHF Channel will be published in the Sailing Instructions and posted on the Official Notice Board.
- The Coach or Rescue Team stabilizes the victim(s) in the Motorboat and initiates the evacuation to the evacuation point (**EP** in Venue Map). **Annex 4**
- The Coach or a team member remains with the victim(s) until the arrival of the emergency services, triggered by Vilamoura Sailing.
- The Coach or a team member shall accompany the victim(s) and the emergency services on the evacuation process
- The Coach or a team member should, if possible, carry the ID documents of the victim(s).
- Emergency services will decide the course of action and where to evacuate the victim(s) if necessary.

MAIN PARTNERS



INSTITUTIONAL PARTNERS



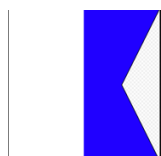
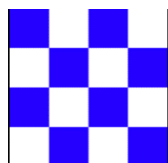
EVENT SPONSORS





GENERAL EVACUATION ALARM SIGNALING:

At sea the evacuation, if necessary, will be signaled according to the international code of Signs FLAG N (November) on FLAG A (Alpha), procedure accompanied by continuous sound signals.



Evacuation points

There are two meeting points for the evacuation of the sea:

- Vilamoura Marina Waiting Pier (EP Point - Annex 04)
- Marina Slipway (Point 7 - Annex 04)

The Evacuation Meeting Point will be communicated via VHF channel 69 by the Race Committee to the DSP/ CCA

In the North and/or South compounds, It will be made a continuous sound signal, followed by instructions made through the sound installation.

Medical Procedures for Rescue at Sea

The PMSM plan serves as a guide for the medical procedures to be performed, for the safety teams at Sea - **Annex 03**.

MAIN PARTNERS



INSTITUTIONAL PARTNERS



EVENT SPONSORS





Rescue and Evacuation Plan

The procedure for evacuation Ashore follows the following phases:

- The Coach or a team member identifies the situation and clearly assesses the risk.
- The Coach or a team member immediately informs Vilamoura Sailing, through VHF Channel 69, of their exact location.
- The Coach or a team member remains with the victim(s) until the arrival of the emergency services, triggered by Vilamoura Sailing.
- The Coach or a team member shall accompany the victim(s) and the emergency services on the evacuation process.
- The Coach or a team member should, if possible, carry the ID documents of the victim(s).
- The CCA quickly assesses the risk and:
 - Triggers 112 for immediate evacuation
 - Requests evacuation for private clinic - "Clínica Médica de Vilamoura"
- Emergency services will decide the course of action and where to evacuate the victim(s) if necessary.

MAIN PARTNERS



loulé
concelho



INSTITUTIONAL PARTNERS



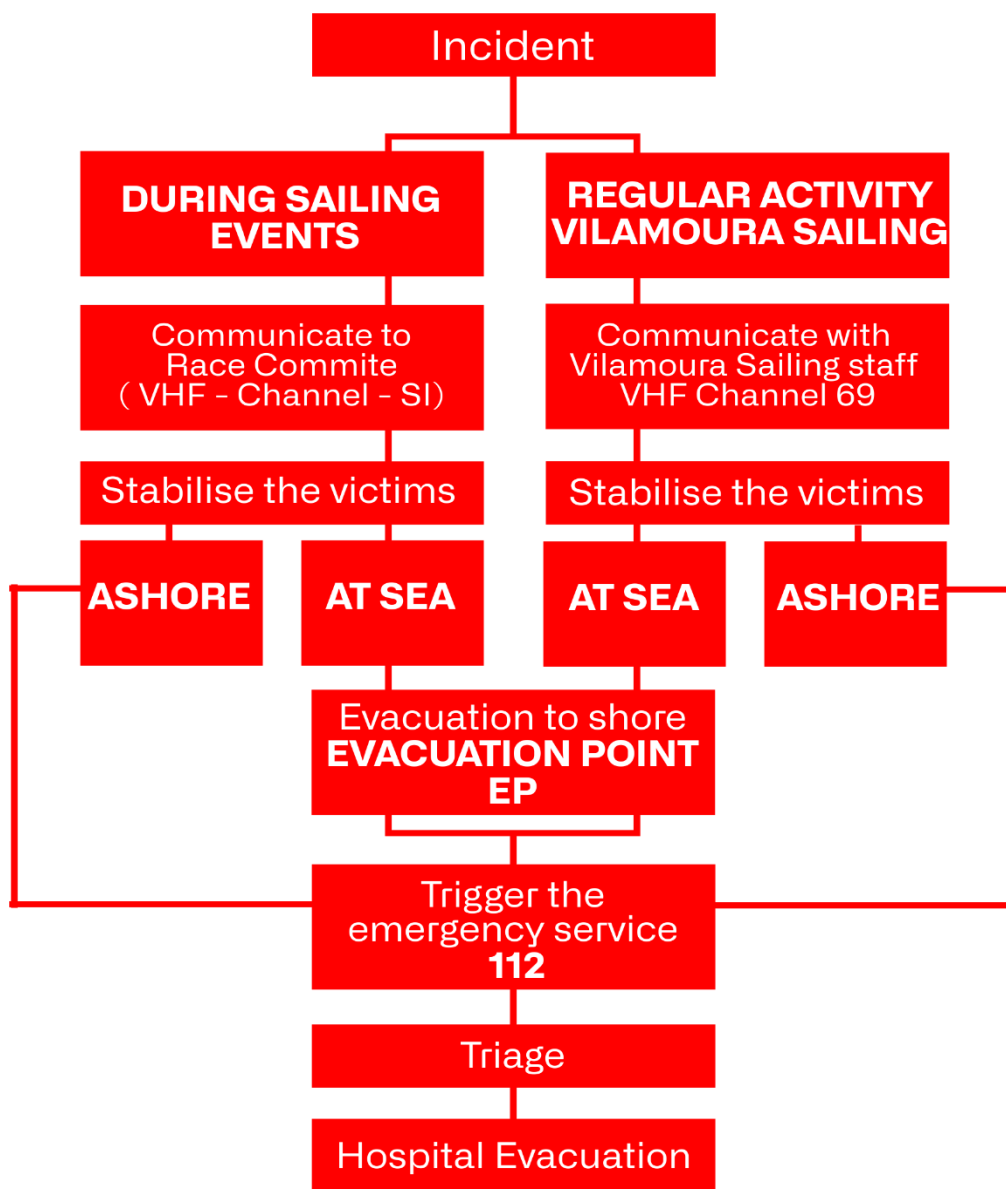
EVENT SPONSORS





Rescue and Evacuation Plan

Rescue and evacuation protocol



MAIN PARTNERS



INSTITUTIONAL PARTNERS



EVENT SPONSORS





III

ANNEXES

Annex 01

Contacts CCE/CCA Event Coordination Center

Name	Cell phone	Location
Event security director		
Nuno Reis	+351 965 391 120	Event Coordination Centre (4)
Director of Security at Vilamoura Sailing Training Centre		
Ivo Ferreira	+351 910 099 217	Activity Coordination Centre (4)
Director of Evidence Security		
Gonçalo Neves	+351 935 469 030	Event Coordination Centre (4)
Public Relations		
Daniel Neves (Daniel Neves)		Event Coordination Centre (4)
Emergency Numbers		
National emergency number	112	
Clinica Particular de Vilamoura	+ 351 282 420 400	

MAIN PARTNERS



INSTITUTIONAL PARTNERS



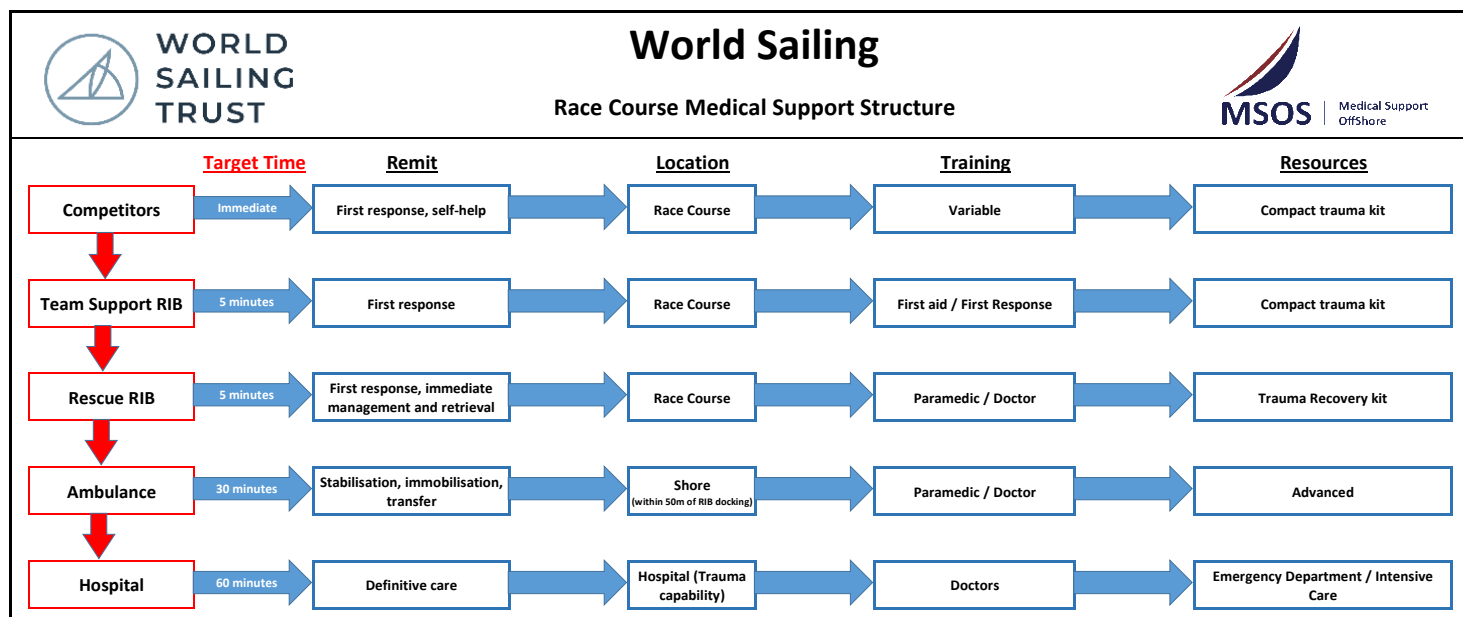
EVENT SPONSORS





Annex 02

Medical Plan for Procedures and Sea Rescue



MAIN PARTNERS



INSTITUTIONAL PARTNERS



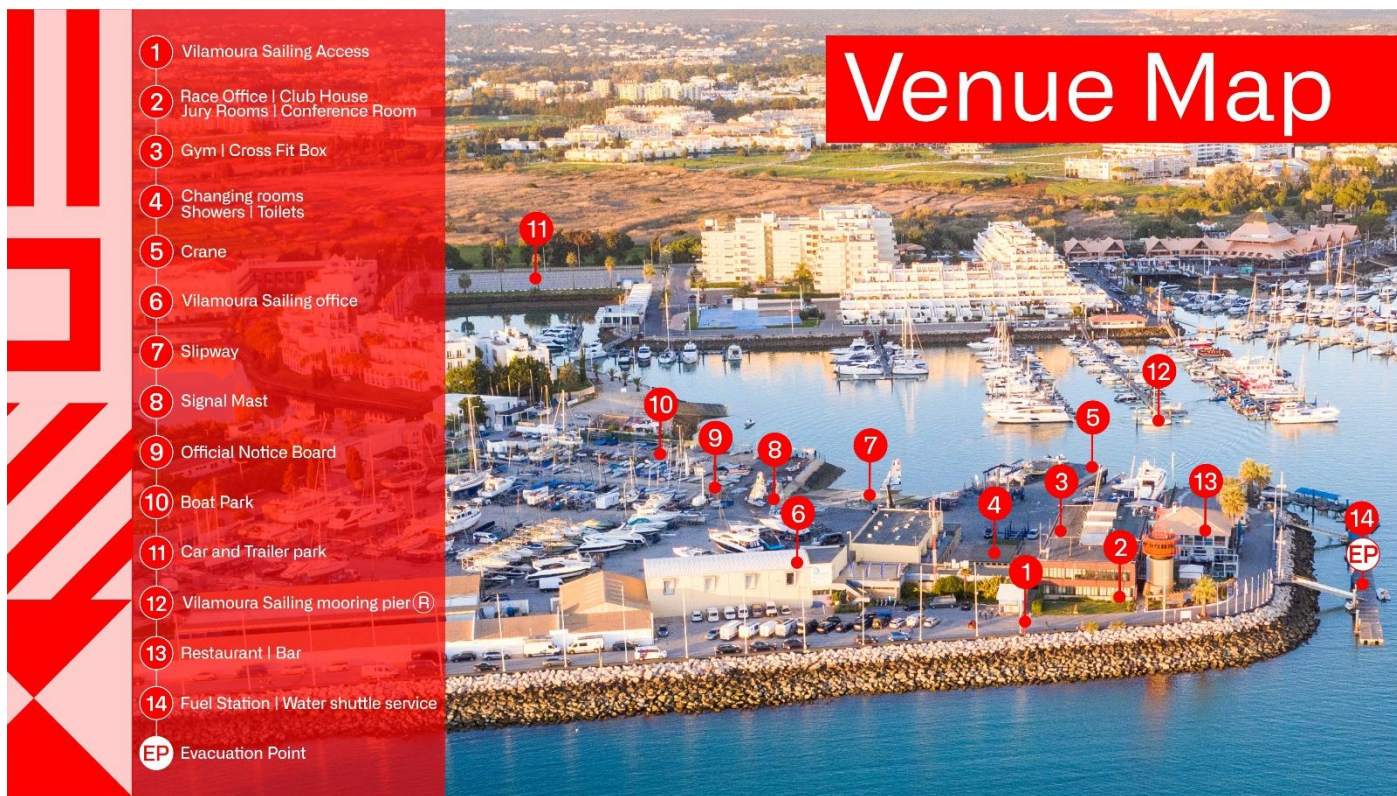
EVENT SPONSORS





Rescue and Evacuation Plan

Annex 03



MAIN PARTNERS



INSTITUTIONAL PARTNERS



EVENT SPONSORS



TECHNICAL PARTNERS

